



# Painting

Shannon Dowdall - Group A

# Francis Bacon

---

I was really inspired by the dark, eerie feelings conveyed in Bacon's paintings and drawings, in particular his 1950's era. His style and subject matter during this period include figures painted in sombre hues using free gestural brush strokes.

'His paintings evoke the tonality of contemporary newspaper printing and, in works such as 'Three Studies from the Human Head', 1953, black and white photography.'







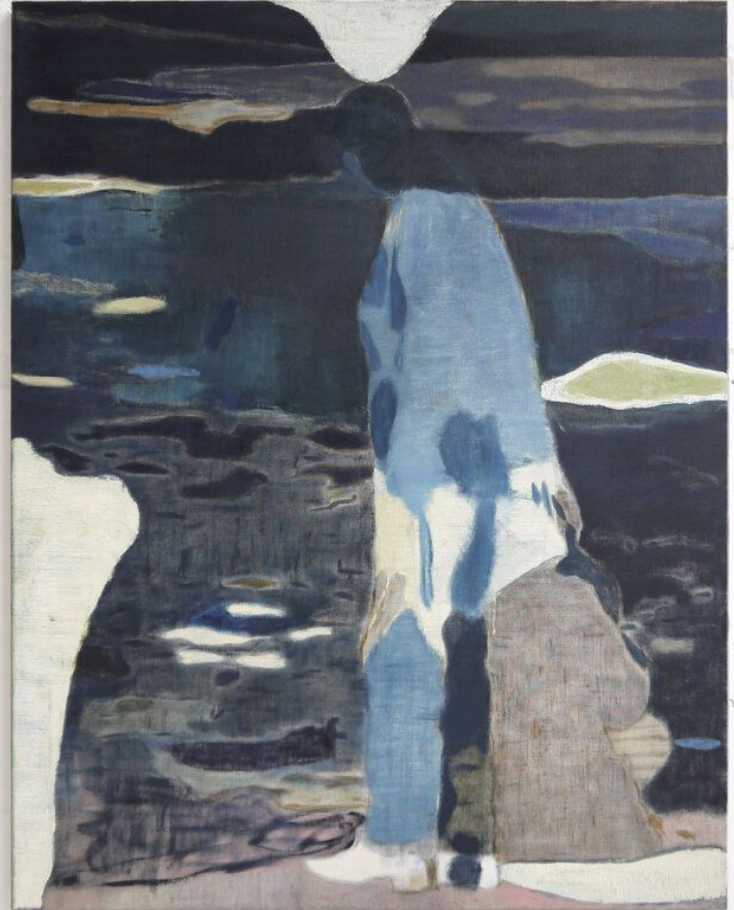




# Colm Mac Athlaoich

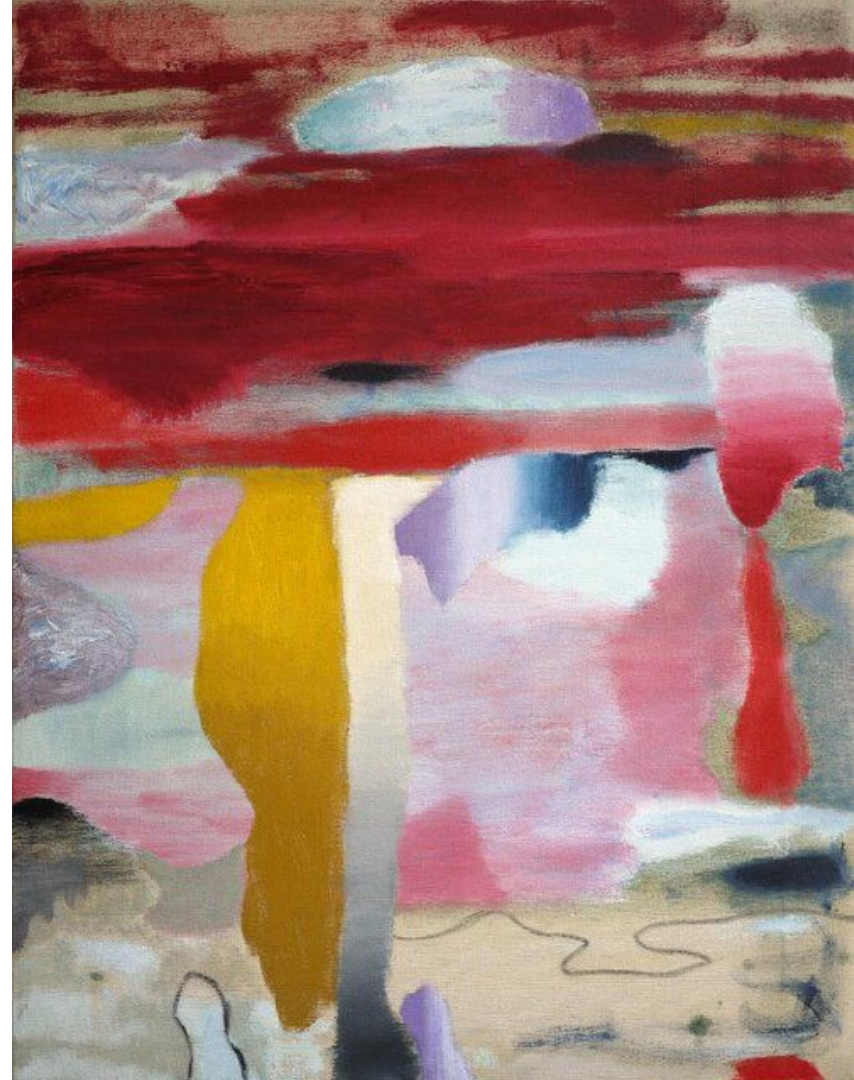
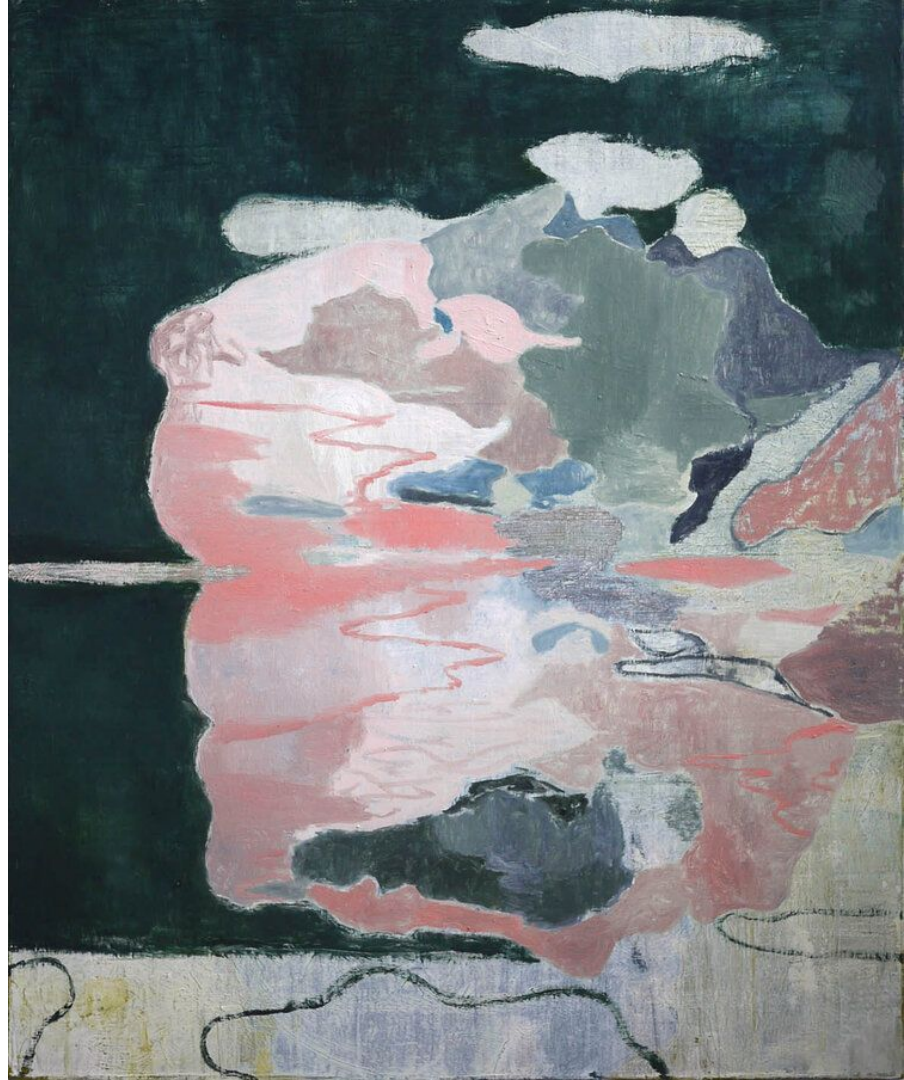
---

I really love the broad strokes of solid colour Colm Mac Athlaoich utilises within his work. The patchiness in some of his works reminds me of faded t-shirts and bleach stained jeans which makes me think of home.









# Caragh Thuring

I was inspired by the blocky, mark making quality of Caragh Thuring's work and I really enjoyed her dark palette adding pops of colour here and there.











# Bartek Materka

---

I really enjoyed the photo negative translucent feeling of Bartek Materka's work. He usually focuses on the theme of childhood and within his work he portrays a dark feeling. I love his use of colour and how it seems like its seeping through a coating of black paint.











# Research and Processes



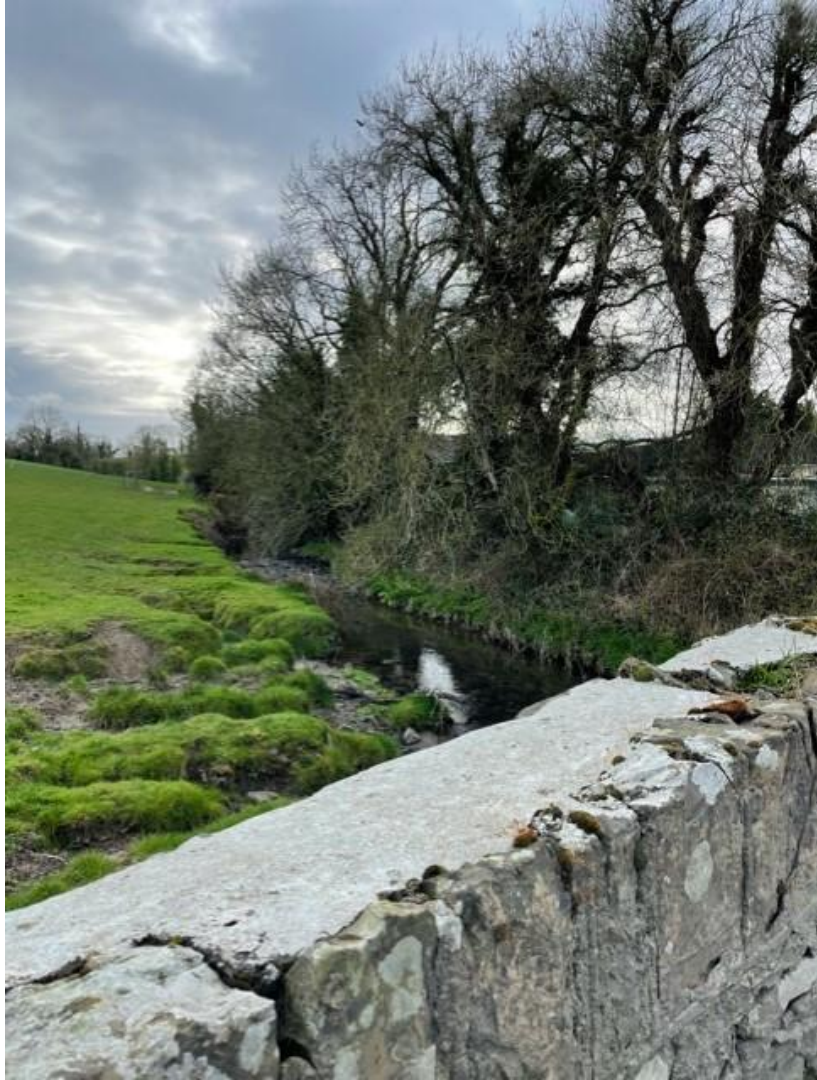
















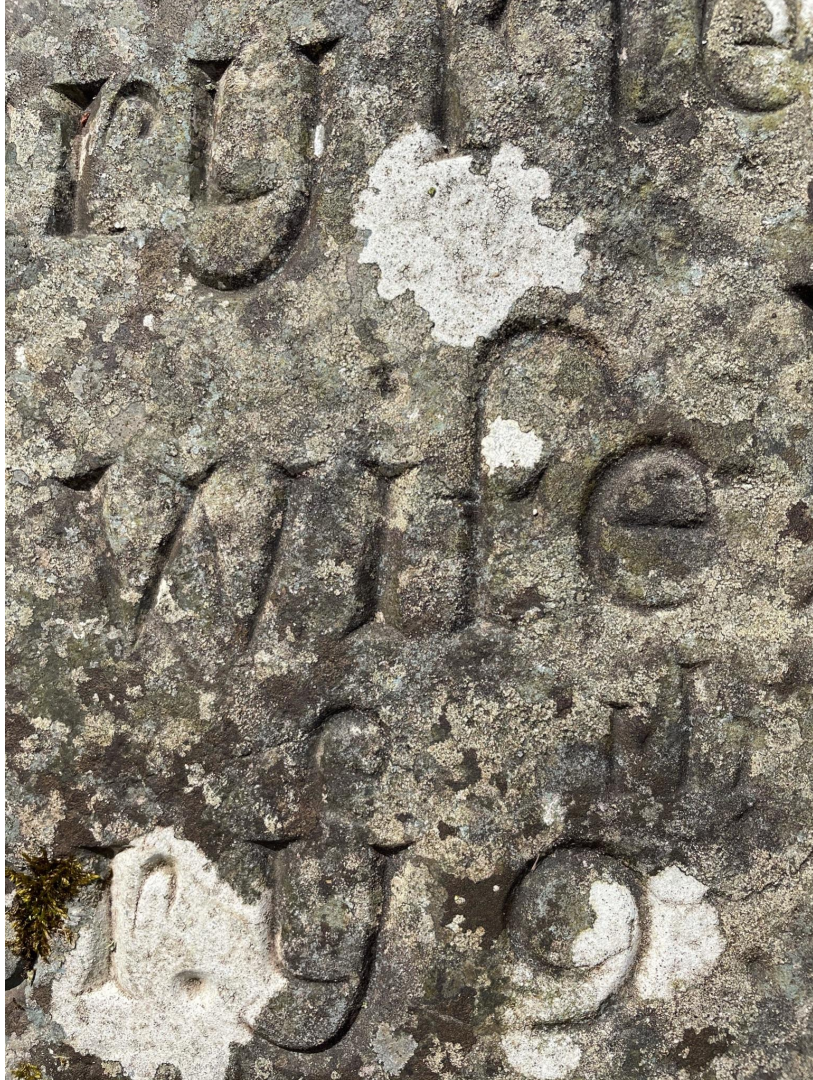








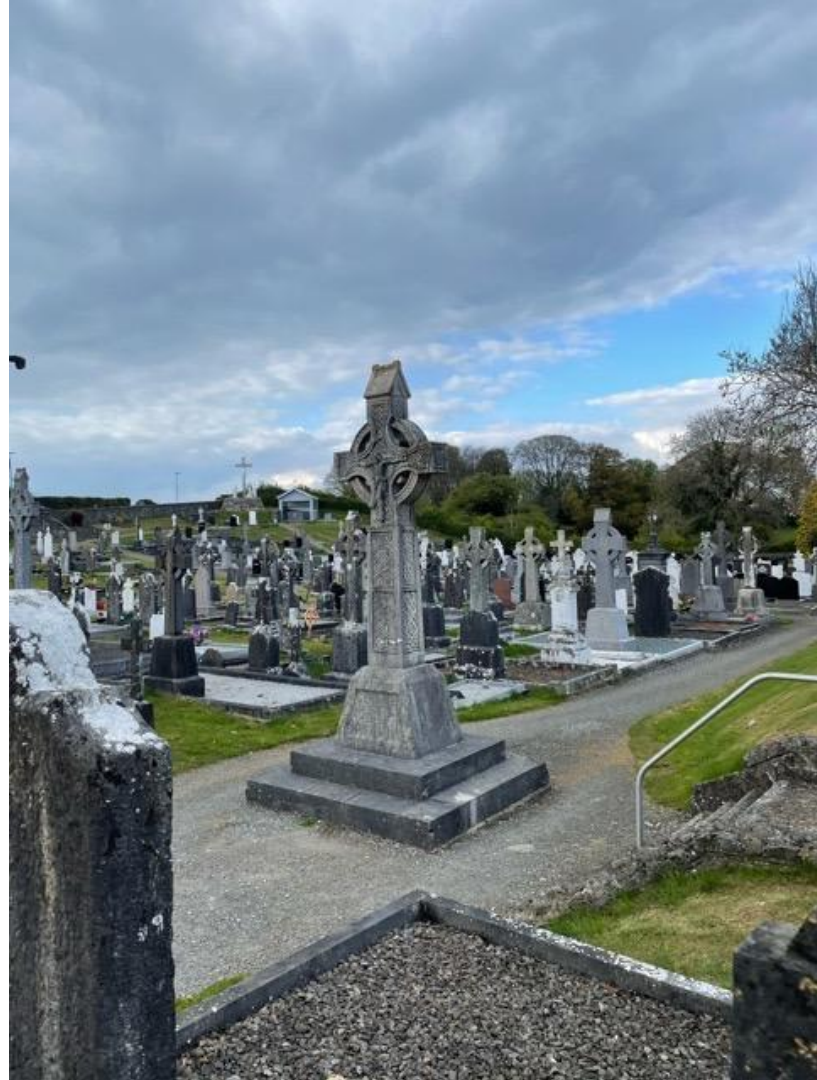








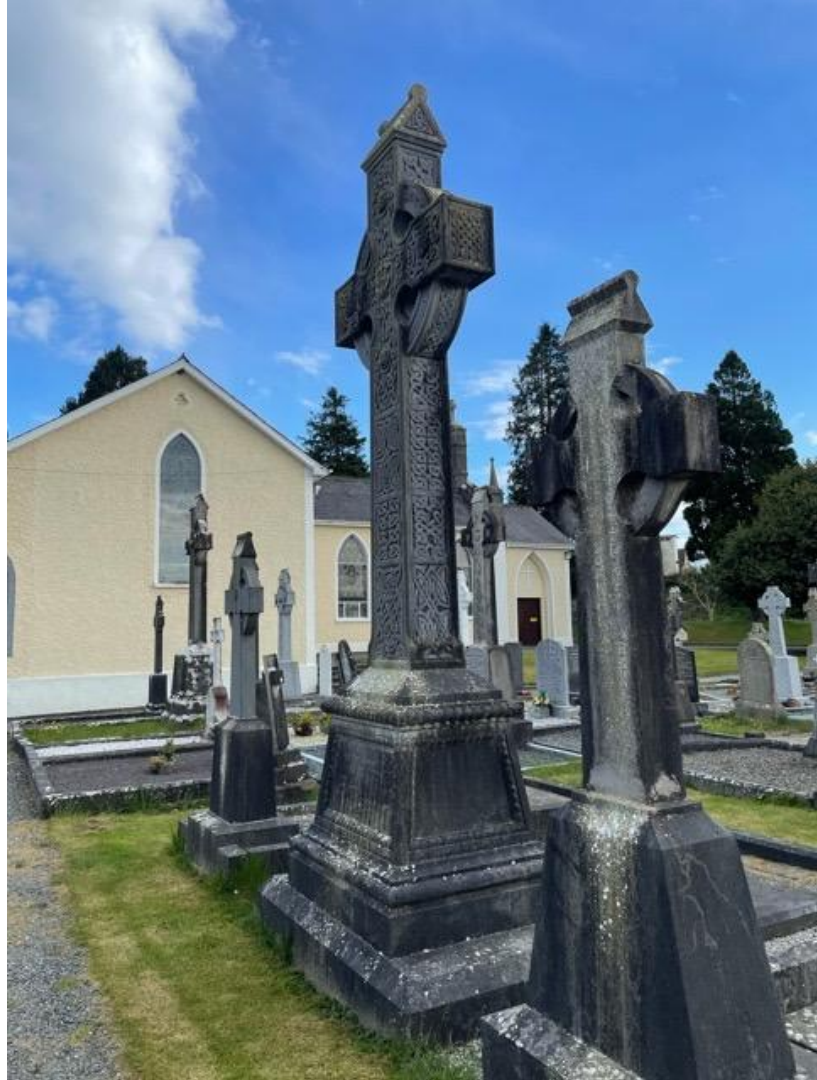




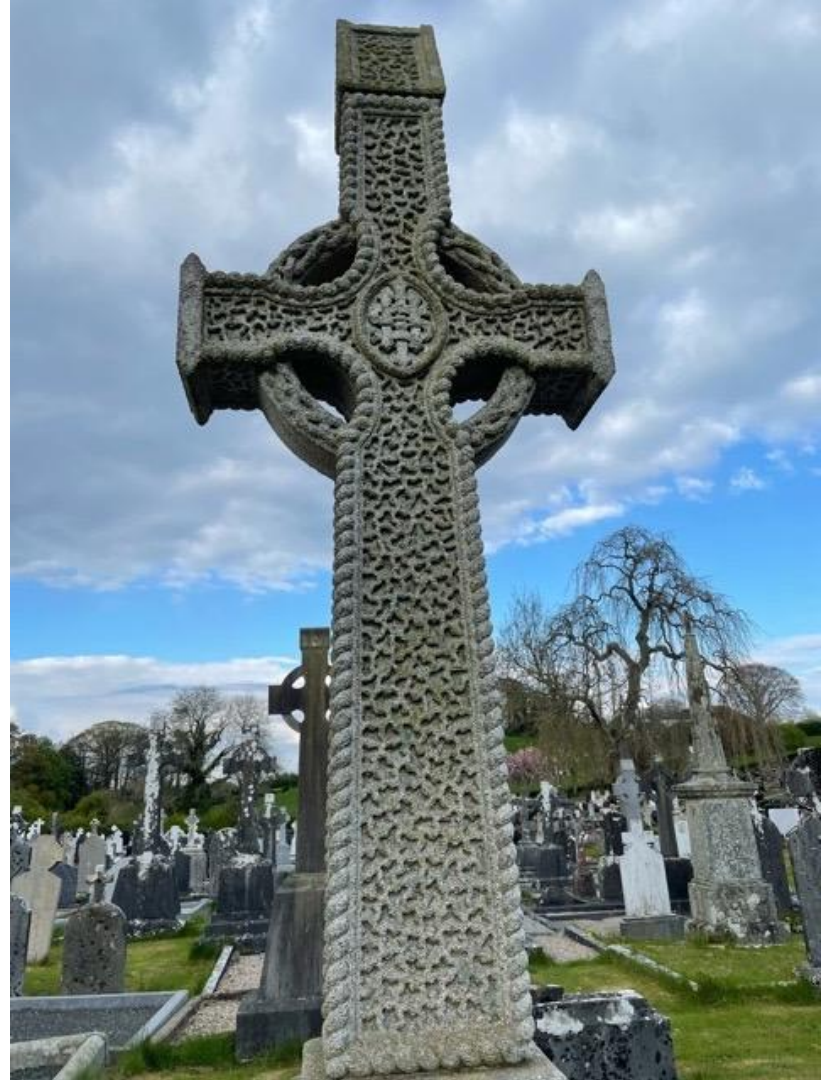








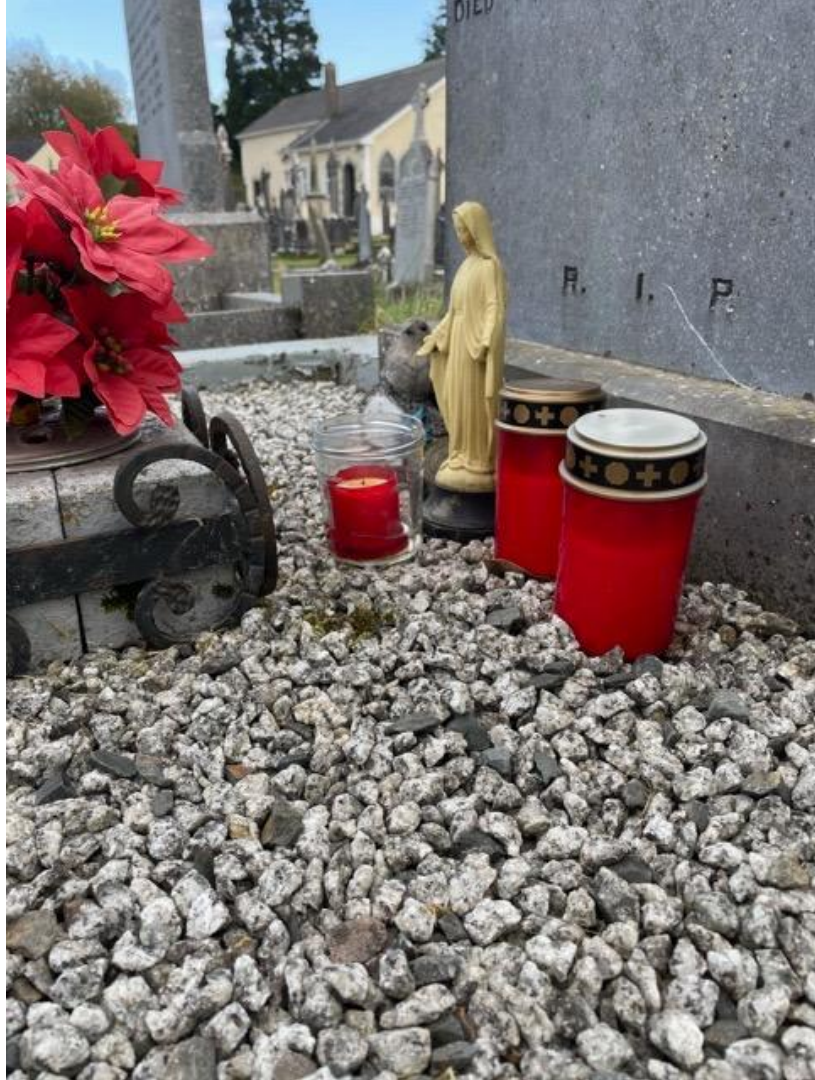
















Plein air studies































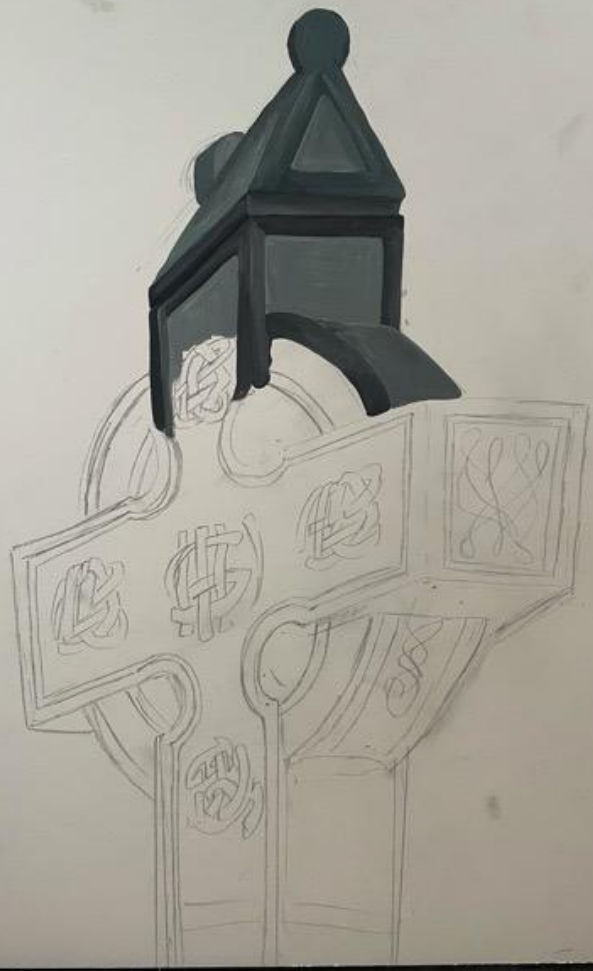
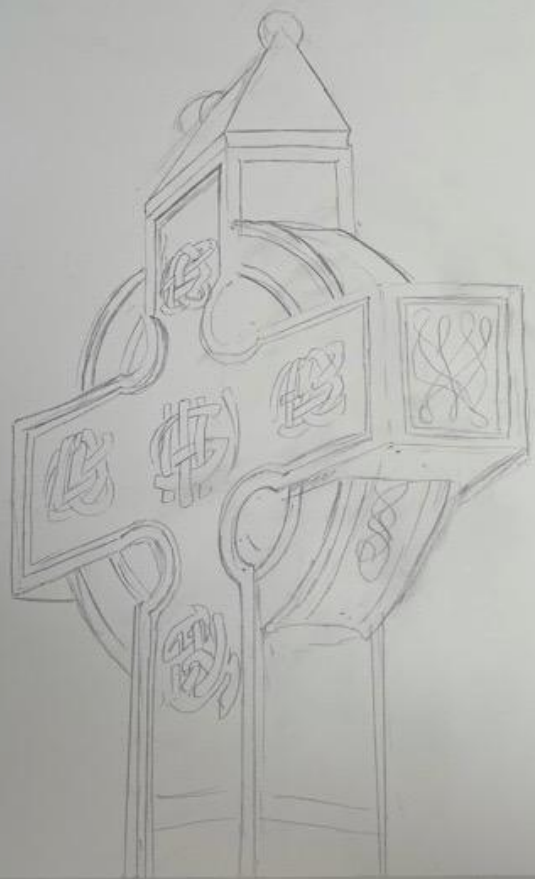






Experimenting with prints

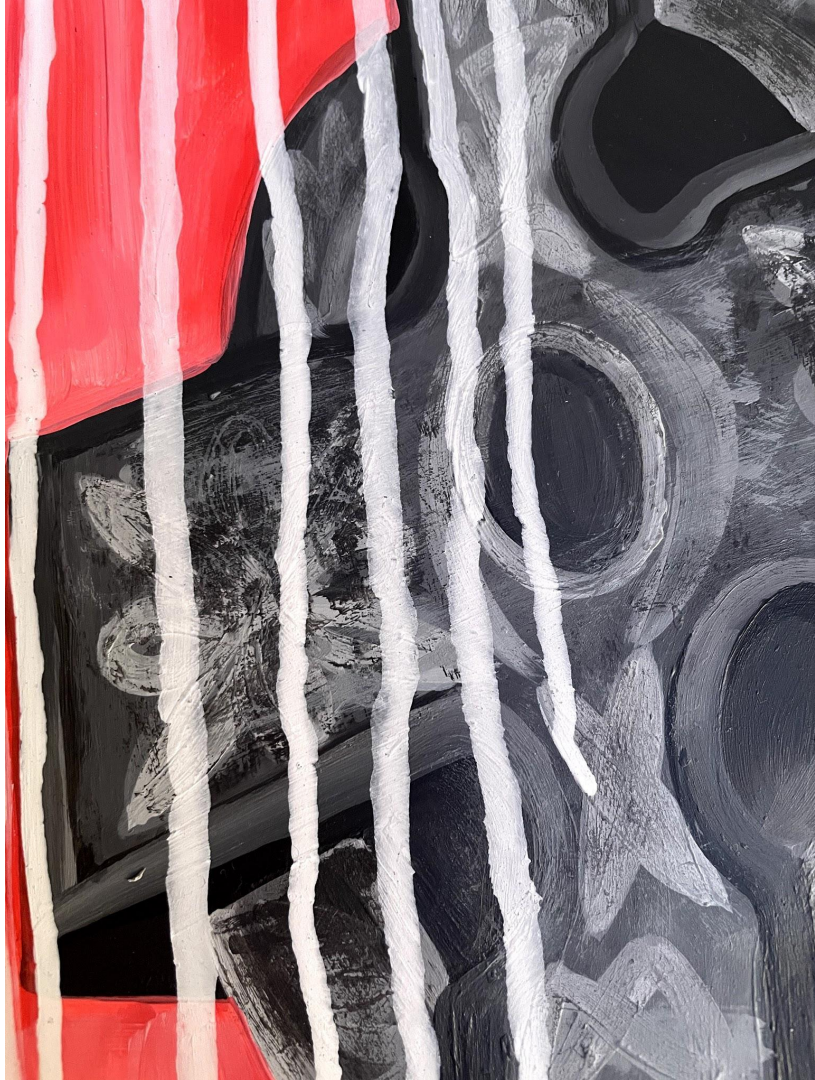






















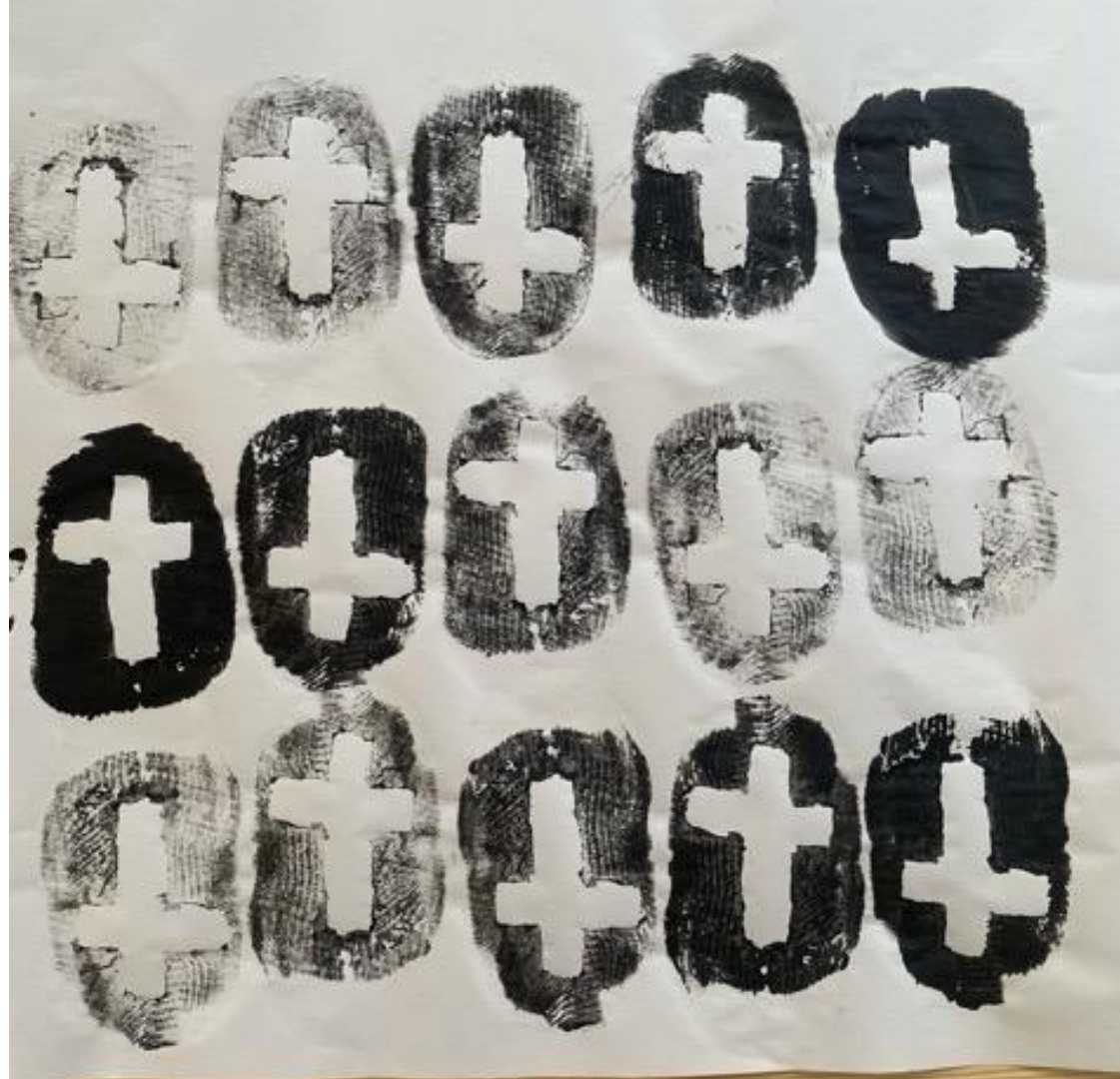












Experimenting with sugar glass to create my own stained glass window





Fail.







































# Notebook Work

# Quick Sketches from Memory









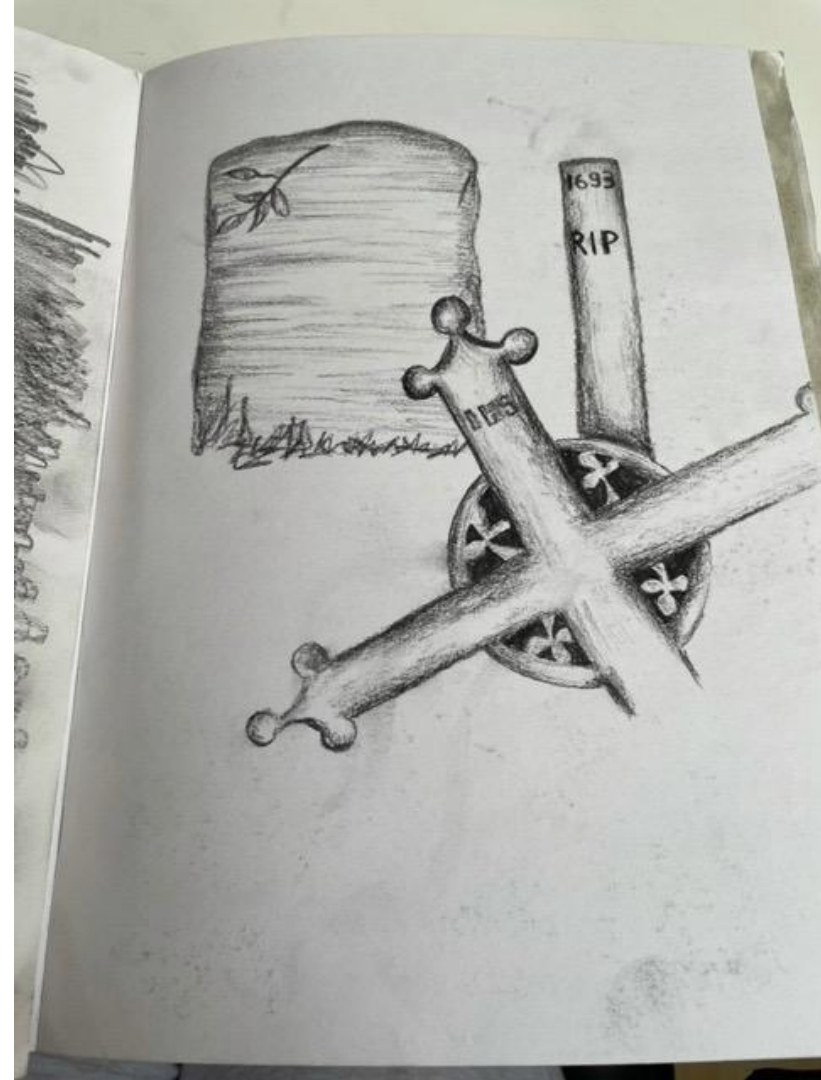
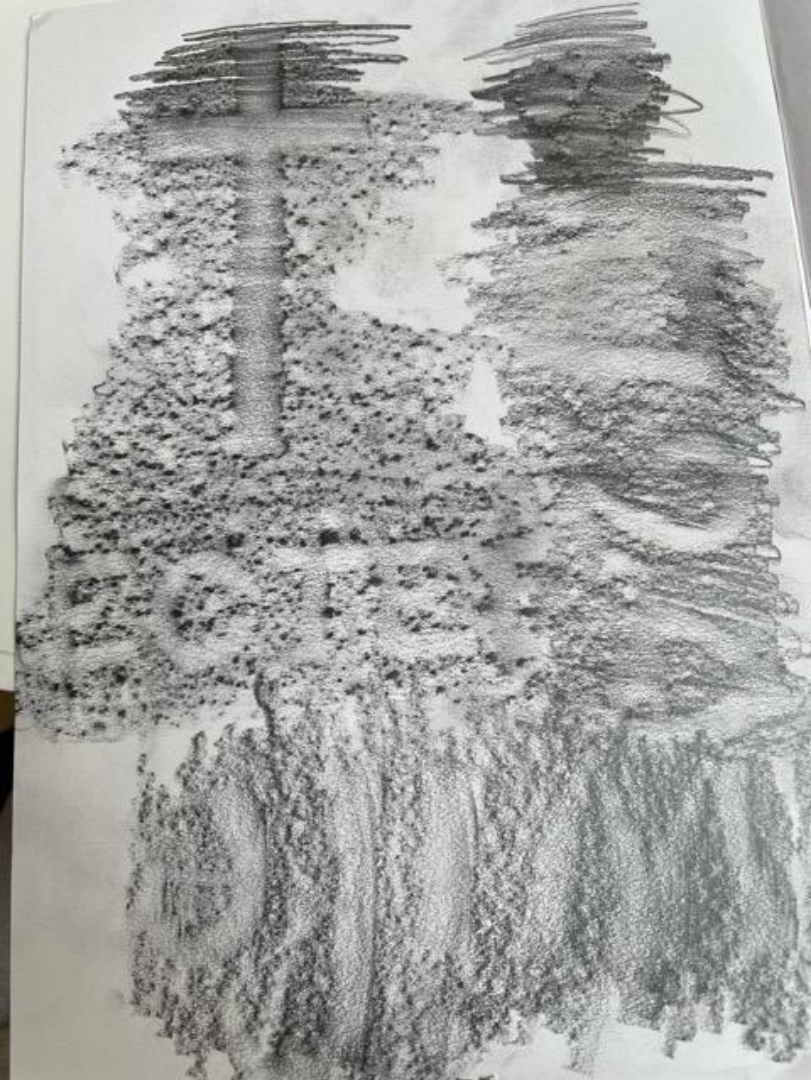
Handwritten text in a script, possibly Urdu or Persian, located at the top of the page. The text is partially obscured by the sketch and is difficult to read.



















SHENYANG

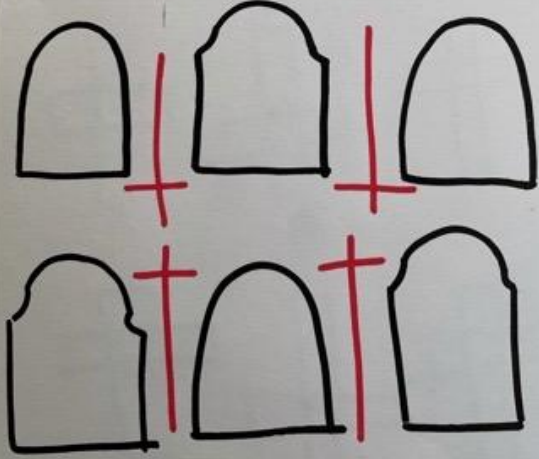
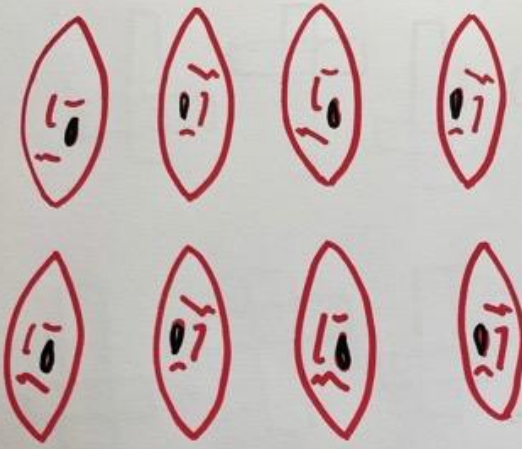
SHENYANG

SHENYANG

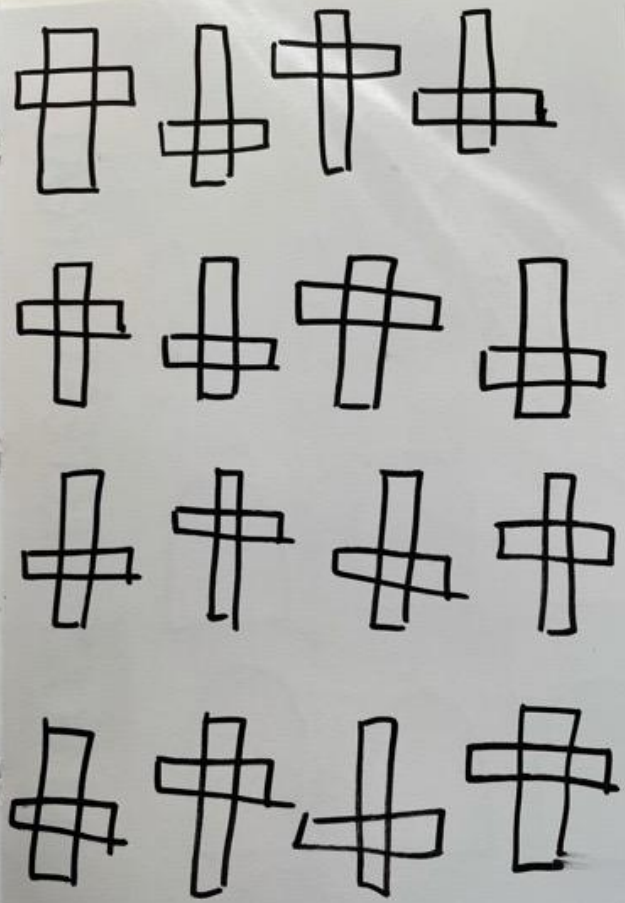
SHENYANG

SHENYANG





. REPEAT , REPEAT , REPEAT .



Workspace

